

ATLAS Mezzanine PCB Revision H BOM - 9/19/2000					
ADDITIONAL COMPONENTS for PROTECTION CIRCUIT ASSEMBLIES:					
Quan	Value	Package			
72	20 OHM	0805			
48	BAV99 diode	SOT23			
24	.01UF CAP	0805			
QUAN	REF DES	VALUE	PACKAGE	FOOTPRINT	NOTES
	JP10	SAMTEC 16	HEADER_16	16PIN SMT/TH SAMTEC100_REV1	
	JP8	SAMTEC 16	HEADER_16	16PIN SMT/TH SAMTEC100_REV1	
	JP9	SAMTEC 16	HEADER_16	16PIN SMT/TH SAMTEC100_REV1	
3		SAMTEC 16 Count			
	U1	LMC6482	LMC6482	8-PIN SOIC	
1		LMC6482 Count			
	U5	DS1722	DS1722	8-PIN SOIC	
1		DS1722 Count			
	ASD1	ASDCHIP	ASDCHIP_0	ASD1 (64PIN TQFP)	
	ASD2	ASDCHIP	ASDCHIP_0	ASD1 (64PIN TQFP)	
	ASD3	ASDCHIP	ASDCHIP_0	ASD1 (64PIN TQFP)	
	ASD4	ASDCHIP	ASDCHIP_0	ASD1 (64PIN TQFP)	
	ASD5	ASDCHIP	ASDCHIP_0	ASD1 (64PIN TQFP)	
	ASD6	ASDCHIP	ASDCHIP_0	ASD1 (64PIN TQFP)	
6		ASDCHIP Count			
	C5	10 UF	CAPACITOR	EIAB	
	C80	10 UF	CAPACITOR	EIAB	
2		10 UF Count			
	JP11	HEADER 6	CON4	FTS-102-SAMTEC	
	JP12	HEADER 6	CON4	FTS-102-SAMTEC	
	JP14	HEADER 6	CON4	FTS-102-SAMTEC	
3		HEADER 6 Count			
	J6	CON8	CON8	FTS-104-SAMTEC	
1		CON8 Count			
	J2	CON16	CON16	FTS-108-SAMTEC	
	J3	CON16	CON16	FTS-108-SAMTEC	
	J4	CON16	CON16	FTS-108-SAMTEC	
3		CON16 Count			
	U8	MAX550A	MAX550A_1	MAX550	
1		MAX550A Count			
	J1	CON36	CON36	MDR36	
1		CON36 Count			
	R1	10K POT	POT	MULTI-TURN SMT POT	
1		10K POT Count			
	PR1	6 20OHM RESIST..	PROTECTION2_6	PR3	See Detail
	PR10	6 20OHM RESIST..	PROTECTION2_6	PR3	See Detail
	PR11	6 20OHM RESIST..	PROTECTION2_6	PR3	See Detail
	PR12	6 20OHM RESIST..	PROTECTION2_6	PR3	See Detail
	PR2	6 20OHM RESIST..	PROTECTION2_6	PR3	See Detail
	PR3	6 20OHM RESIST..	PROTECTION2_6	PR3	See Detail
	PR4	6 20OHM RESIST..	PROTECTION2_6	PR3	See Detail
	PR5	6 20OHM RESIST..	PROTECTION2_6	PR3	See Detail
	PR6	6 20OHM RESIST..	PROTECTION2_6	PR3	See Detail
	PR7	6 20OHM RESIST..	PROTECTION2_6	PR3	See Detail
	PR8	6 20OHM RESIST..	PROTECTION2_6	PR3	See Detail
	PR9	6 20OHM RESIST..	PROTECTION2_6	PR3	See Detail
12		6 20OHM RESIST.. Count			
	U9	AMT1	AMT1_0	QFP144_AMT	
1		AMT1 Count			
	C1		0.01 CAP_NP	SM/C_0805	
	C11		0.01 CAP_NP	SM/C_0805	
	C12		0.01 CAP_NP	SM/C_0805	
	C13		0.01 CAP_NP	SM/C_0805	
	C14		0.01 CAP_NP	SM/C_0805	
	C15		0.01 CAP_NP	SM/C_0805	
	C16		0.01 CAP_NP	SM/C_0805	
	C17		0.01 CAP_NP	SM/C_0805	
	C18		0.01 CAP_NP	SM/C_0805	
	C19		0.01 CAP_NP	SM/C_0805	
	C2		0.01 CAP_NP	SM/C_0805	
	C20		0.01 CAP_NP	SM/C_0805	
	C21		0.01 CAP_NP	SM/C_0805	

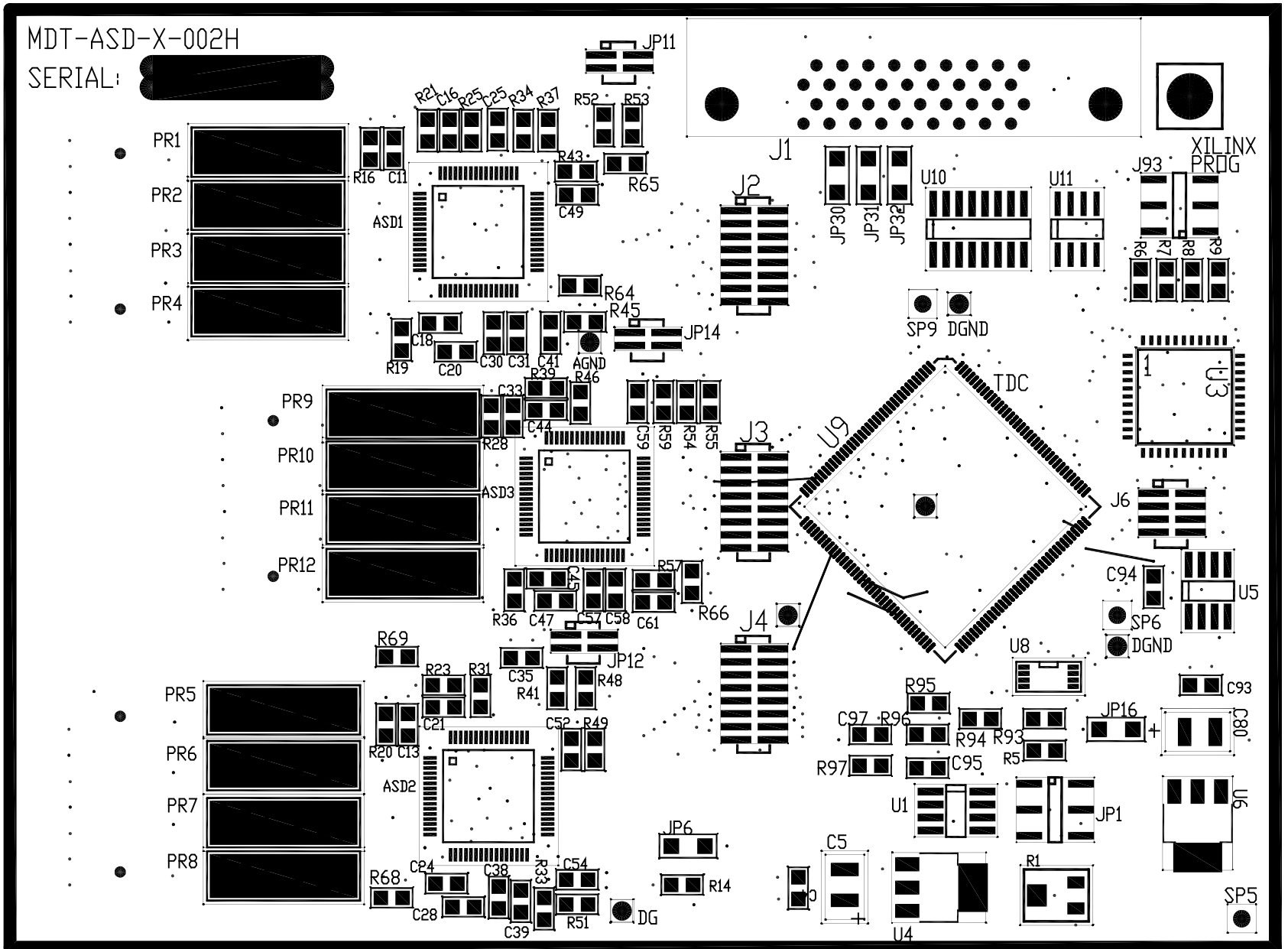
	C22		0.01	CAP_NP	SM/C_0805	
	C23		0.01	CAP_NP	SM/C_0805	
	C24		0.01	CAP_NP	SM/C_0805	
	C25		0.01	CAP_NP	SM/C_0805	
	C26		0.01	CAP_NP	SM/C_0805	
	C27		0.01	CAP_NP	SM/C_0805	
	C28		0.01	CAP_NP	SM/C_0805	
	C29		0.01	CAP_NP	SM/C_0805	
	C30		0.01	CAP_NP	SM/C_0805	
	C31		0.01	CAP_NP	SM/C_0805	
	C32		0.01	CAP_NP	SM/C_0805	
	C33		0.01	CAP_NP	SM/C_0805	
	C34		0.01	CAP_NP	SM/C_0805	
	C35		0.01	CAP_NP	SM/C_0805	
	C36		0.01	CAP_NP	SM/C_0805	
	C37		0.01	CAP_NP	SM/C_0805	
	C38		0.01	CAP_NP	SM/C_0805	
	C39		0.01	CAP_NP	SM/C_0805	
	C4		0.01	CAP_NP	SM/C_0805	
	C40		0.01	CAP_NP	SM/C_0805	
	C41		0.01	CAP_NP	SM/C_0805	
	C42		0.01	CAP_NP	SM/C_0805	
	C43		0.01	CAP_NP	SM/C_0805	
	C44		0.01	CAP_NP	SM/C_0805	
	C45		0.01	CAP_NP	SM/C_0805	
	C46		0.01	CAP_NP	SM/C_0805	
	C47		0.01	CAP_NP	SM/C_0805	
	C48		0.01	CAP_NP	SM/C_0805	
	C49		0.01	CAP_NP	SM/C_0805	
	C50		0.01	CAP_NP	SM/C_0805	
	C51		0.01	CAP_NP	SM/C_0805	
	C52		0.01	CAP_NP	SM/C_0805	
	C53		0.01	CAP_NP	SM/C_0805	
	C54		0.01	CAP_NP	SM/C_0805	
	C55		0.01	CAP_NP	SM/C_0805	
	C56		0.01	CAP_NP	SM/C_0805	
	C57		0.01	CAP_NP	SM/C_0805	
	C58		0.01	CAP_NP	SM/C_0805	
	C59		0.01	CAP_NP	SM/C_0805	
	C60		0.01	CAP_NP	SM/C_0805	
	C61		0.01	CAP_NP	SM/C_0805	
	C62		0.01	CAP_NP	SM/C_0805	
	C63		0.01	CAP_NP	SM/C_0805	
	C64		0.01	CAP_NP	SM/C_0805	
	C65		0.01	CAP_NP	SM/C_0805	
	C66		0.01	CAP_NP	SM/C_0805	
	C71		0.01	CAP_NP	SM/C_0805	
	C73		0.01	CAP_NP	SM/C_0805	
	C75		0.01	CAP_NP	SM/C_0805	
	C76		0.01	CAP_NP	SM/C_0805	
	C77		0.01	CAP_NP	SM/C_0805	
	C78		0.01	CAP_NP	SM/C_0805	
	C79		0.01	CAP_NP	SM/C_0805	
	C93		0.01	CAP_NP	SM/C_0805	
	C94		0.01	CAP_NP	SM/C_0805	
	C95		0.01	CAP_NP	SM/C_0805	
	C97		0.01	CAP_NP	SM/C_0805	
70		0.01 Count				
	R16		1	R	SM/R_0805	
	R17		1	R	SM/R_0805	
	R18		1	R	SM/R_0805	
	R20		1	R	SM/R_0805	
	R21		1	R	SM/R_0805	
	R22		1	R	SM/R_0805	
	R23		1	R	SM/R_0805	
	R24		1	R	SM/R_0805	
	R28		1	R	SM/R_0805	
	R29		1	R	SM/R_0805	
	R38		1	R	SM/R_0805	
	R39		1	R	SM/R_0805	
	R40		1	R	SM/R_0805	
	R42		1	R	SM/R_0805	

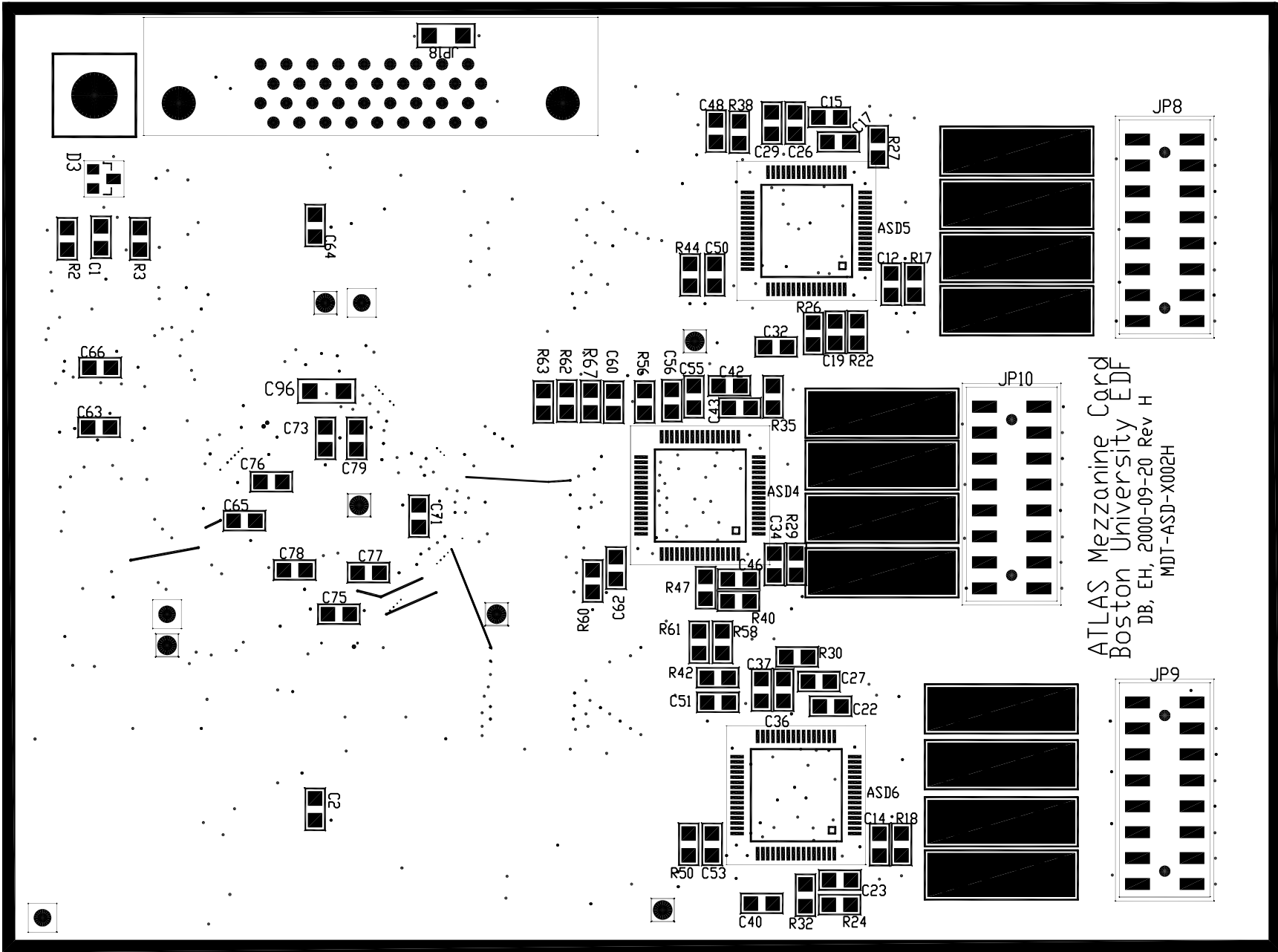
	R43		1 R	SM/R_0805	
	R44		1 R	SM/R_0805	
	R45		1 R	SM/R_0805	
	R49		1 R	SM/R_0805	
	R50		1 R	SM/R_0805	
	R51		1 R	SM/R_0805	
	R56		1 R	SM/R_0805	
	R57		1 R	SM/R_0805	
	R59		1 R	SM/R_0805	
	R60		1 R	SM/R_0805	
24		1 Count			
	R34		50 R	SM/R_0805	51 ok for 50
	R37		50 R	SM/R_0805	51 ok for 50
	R41		50 R	SM/R_0805	51 ok for 50
	R48		50 R	SM/R_0805	51 ok for 50
	R52		50 R	SM/R_0805	51 ok for 50
	R53		50 R	SM/R_0805	51 ok for 50
	R54		50 R	SM/R_0805	51 ok for 50
	R55		50 R	SM/R_0805	51 ok for 50
	R58		50 R	SM/R_0805	51 ok for 50
	R61		50 R	SM/R_0805	51 ok for 50
	R62		50 R	SM/R_0805	51 ok for 50
	R63		50 R	SM/R_0805	51 ok for 50
12		50 Count			
	R95		51 R	SM/R_0805	
	R96		51 R	SM/R_0805	
2		51 Count			
	R14	10K	R	SM/R_0805	
	R3	10K	R	SM/R_0805	
	R6	10K	R	SM/R_0805	
	R7	10K	R	SM/R_0805	
	R8	10K	R	SM/R_0805	
	R9	10K	R	SM/R_0805	
6		10K Count			
	R97	10K 1%	R	SM/R_0805	
1		10K 1% Count			
	R64	12K	RESISTOR	SM/R_0805	
	R65	12K	RESISTOR	SM/R_0805	
	R66	12K	RESISTOR	SM/R_0805	
	R67	12K	RESISTOR	SM/R_0805	
	R68	12K	RESISTOR	SM/R_0805	
	R69	12K	RESISTOR	SM/R_0805	
6		12K Count			
	R2	2K	R	SM/R_0805	
1		2K Count			
	R5	3K	R	SM/R_0805	
1		3K Count			
	R93	4.7K	RESISTOR	SM/R_0805	
	R94	4.7K	RESISTOR	SM/R_0805	
2		4.7K Count			
	R25	50K	R	SM/R_0805	
	R26	50K	R	SM/R_0805	
	R31	50K	R	SM/R_0805	
	R32	50K	R	SM/R_0805	
	R46	50K	R	SM/R_0805	
	R47	50K	R	SM/R_0805	
6		50K Count			
	C96	6.8NF	CAP	SM/R_1206	
1		6.8NF Count			
	JP16	JUMPER / 0-OHM	JUMPER	SM/R_1206	
	JP18	JUMPER / 0-OHM	JUMPER	SM/R_1206	
	JP30	JUMPER / 0-OHM	JUMPER	SM/R_1206	
	JP31	JUMPER / 0-OHM	JUMPER	SM/R_1206	
	JP32	JUMPER / 0-OHM	JUMPER	SM/R_1206	
	JP6	JUMPER / 0-OHM	JUMPER	SM/R_1206	
6		JUMPER / 0-OHM Count			
	U4	LM2937 - 3.3	LM2937-3.3	SM/SOT223_1234	
	U6	LM2937 - 3.3	LM2937-3.3	SM/SOT223_1234	
2		LM2937 - 3.3 Count			
	D3	BAS16 DIODE	DIODE	SM/SOT23_123	
1		BAS16 DIODE Count			
	U10	SN65LVD3486A	MC3486	SOG.050/16/WG.244/L.400	

1		SN65LVDT3486A Count			
	U11	SN65LVDS9638D	DS9638	SOG.050/8/WG.244/L.200	
1		SN65LVDS9638D Count			
	J93	CON14	CON6	TSM-103-SAMTEC	
1		CON14 Count			
	JP1	CON6AP	CON6AP	TSM-103-SAMTEC	
1		CON6AP Count			
	U3	XC9572_PC44	XC9572_PC44_5	VQ44	
1		XC9572_PC44 Count			
182		Grand Count			

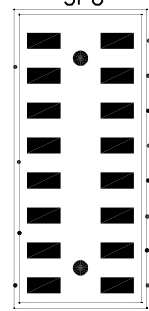
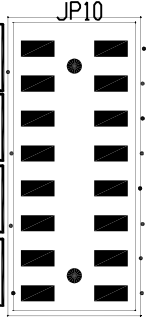
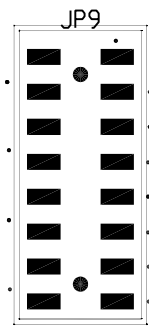
TOP SOLDER MASK

TOP LEGEND



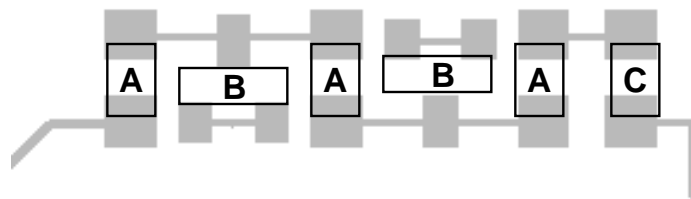
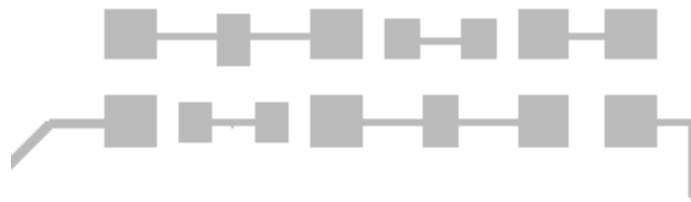


ATLAS Mezzanine Card
Boston University EDF
DB, EH, 2000-09-20 Rev H
MDT-ASD-X002H



ATLAS MDT-ASD-X-002E

Protection Circuit Detail (typical of 6)



A - 20 ohm 0805 Resistor

B - BAV99 Diode

C - .01uF 0805 Capacitor