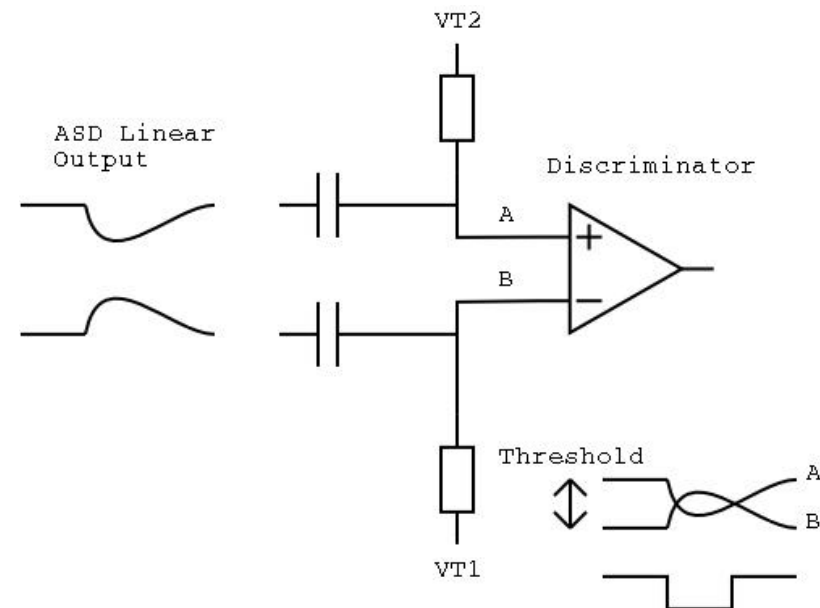


Mezz-Lite Threshold Circuit

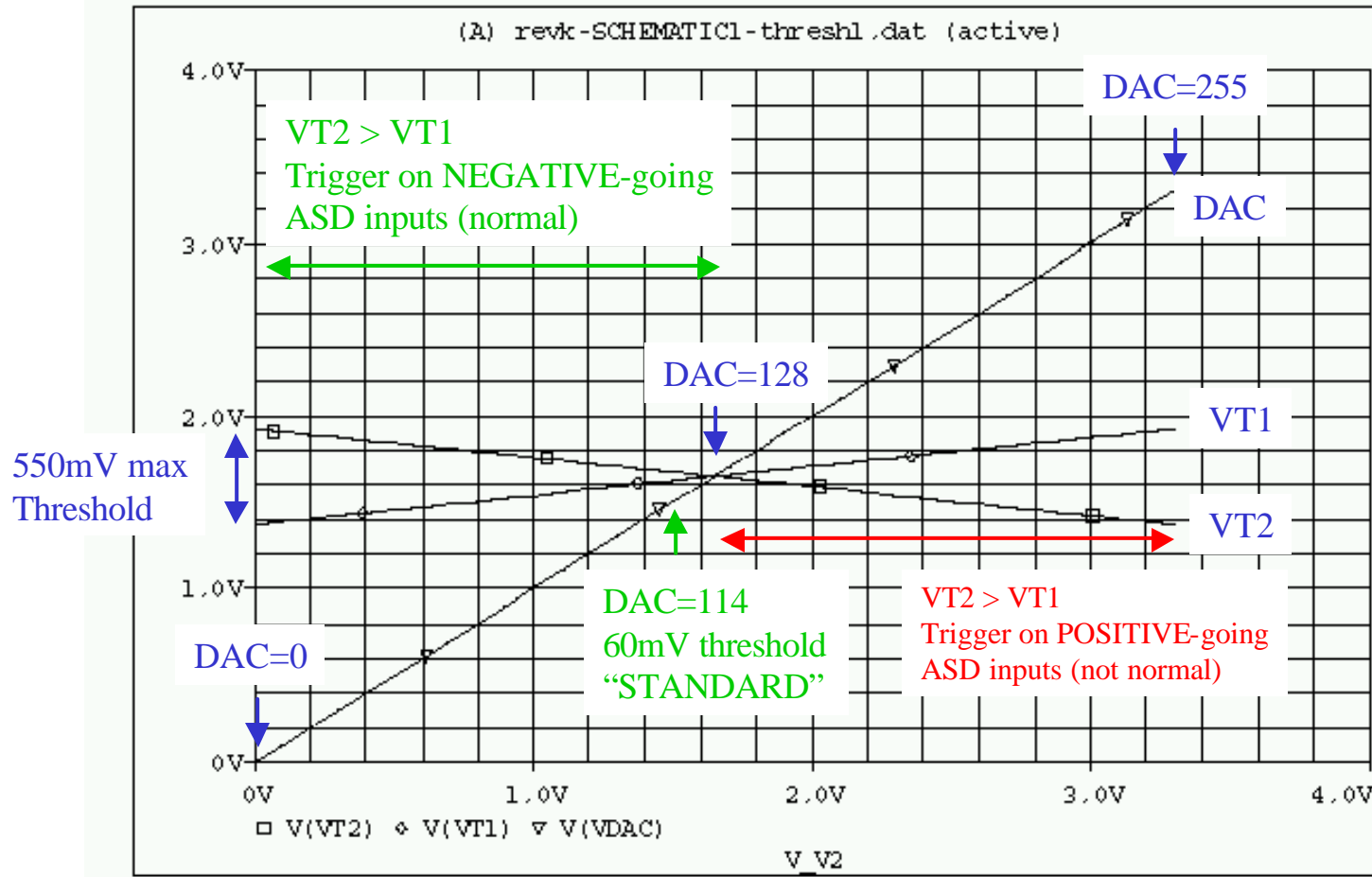
ASD-Lite Discriminator Circuit

- ASD AC-coupled to discriminator
- Threshold applied externally as two DC voltages
- VT1 and VT2 correspond to test points on Mezz-Lite:
 - VT1: JP1 pin 2
 - VT2: JP1 pin 4



Mezz-Lite Threshold Circuit Analysis

** circuit file for profile: threshl
 Date/Time run: 07/24/01 10:05:07 Temperature: 27.0



Mezz-Lite Threshold Circuit

4x6 Rev 1.1 PC board

DAC Output:

0 = 0V

128 = 1.65V

255 = 3.3V

